



AROUND THE PALACE

Setting up a Lateral Flow Testing Centre for Covid-19



The first few weeks of term brought a new but exciting challenge for our Health Officer and operations team: how to set up a Covid-19 lateral flow testing centre on the School site! If the pandemic has taught us anything, it is how to respond rapidly and creatively to each novel request from the Department for Education and this request was no different.

The first challenge was to find the right space in which to locate our new testing centre, ensuring it had a non-porous floor, would allow a one-way system to be set up and had enough space to accommodate the several staff members required to run the new facility. The science department, thankfully, had just the right kind of room.

Our Health Office, Kim Bednarz, our Operations Manager, Tanya Knowles, our mini-bus driver and former paramedic, Sharon Swann and myself duly completed all the relevant training models and got ready to run our trial test using ourselves as Guinea pigs. Having run a successful test, we were ready to start inviting staff to be tested. Having put the staff through the not very

comfortable process of testing we were ready to start testing some students. We invited the children of critical workers to come in for a test before starting the provision on site. I have to praise the girls for how well they coped with having to put the swab so far up their noses. They made far less fuss than some of the staff!

Since that first week, we have now put in place a regular testing regime for the children of critical workers and staff. This is providing all of us with a sense of reassurance that we are doing everything we can to keep everyone in our community safe. We have also expanded the number of staff who are able to process the tests with our highly skilled science technicians all very keen to become involved. I would like to thank Dawn Oakley, Claire Aldred, Jacky Peplow and Matthew Poole for being such enthusiasts.

Having assembled our team and developed a clear process, I know that when we are able to welcome all students back to School we will be ready to test them all!

Mrs Sinclair

Dear all,

In a year of challenges the school has also had to adapt to delivering lateral flow testing for staff and students. In this edition, Mrs Sinclair has written a very interesting piece about how the Old Palace team have delivered this.

Elsewhere the school community continues to combine hard work with positivity to cope with the current situation. As ever, this Bulletin provides an uplifting insight into all that is going on.

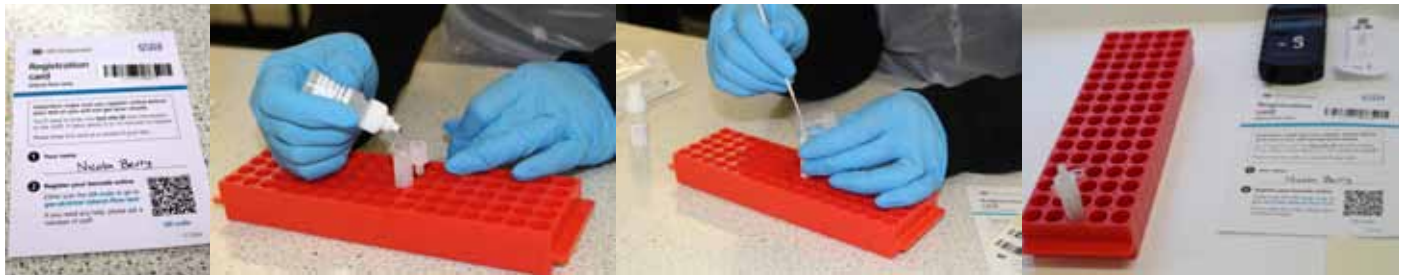
Wishing everyone a relaxing weekend.

Jane Burton, Head

Please send your bulletin photos/ contributions to Mrs Berry: nberry@oldpalace.croydon.sch.uk.

If we don't have room to include it in the current week's bulletin, please be assured it will be featured the following week.

Setting up a Lateral Flow Testing Centre for Covid-19 *continued*



Stage 1:

Students and staff are met at a reception desk and asked how they are and whether or not they are experiencing any Covid symptoms.

Stage 2:

A sample is taken from both nostrils using a swab (like a small sponge on the end of a long stick).

Stage 3:

Once both nostrils have been tested, the swab is placed in a test tube with six drops of a special chemical.

Stage 4:

The swab is swirled around in the test tube for 10 seconds; then the swab is safely deposited in a secure waste bin.

Stage 5:

Two drops of the liquid are dripped onto the testing well in the test cartridge.

Stage 6:

It takes just 30 minutes for the result to appear.

Stage 7:

Staff will upload the information from the person's consent form along with the result. The person will subsequently receive the result as a text message and an email.

Geography: Where in the World?

The answer to last week's *Where in the World* was **Indonesia** (The picture showed Mount Bromo)



Do you want to stretch yourself? The Geography Department has put together some extension activities which are on the Geog VLE pages. <https://oldpalace.sharepoint.com/sites/Geography/SitePages/Home.aspx>

Submit your answer on Forms using the link below. Please note this an internal link.

<https://forms.office.com/Pages/ResponsePage.aspx?id=IEPCiFxEUjUssKSjqGU5CJ4-zx23UVKvh1xAsZm93FUMzY2Nk1DSVc2TEFLS1E1U0IZUFJKOThLVy4u>

Deadline: Thursday 28th January



Where in the World?

Discover the world: use the clues to guess what country this image is from!



1. This country is the largest hazelnut exporter in the world.
2. This country is one that occupies a unique geographic position, lying partly in Asia and partly in Europe.
3. It is said that Santa Claus (St. Nicholas) was born in this country.
4. This country has over 82,000 mosques, more than any other country per capita in the world.
5. This country gave the Dutch their world-famous tulips.

Year 9 PE: Out and About

Year 9 students have enjoyed the opportunity to get out and about in the fresh air during their PE lessons this week.

It is so important for their emotional and physical well-being that each girl has time away from her computer to get a change of scenery by going for a walk. Students have been encouraged to track their progress using various apps, with some attempting the challenge of creating a shape or a letter whilst walking their route. (Students were reminded to stick to the Government guidelines and adhere to social distancing at all times).

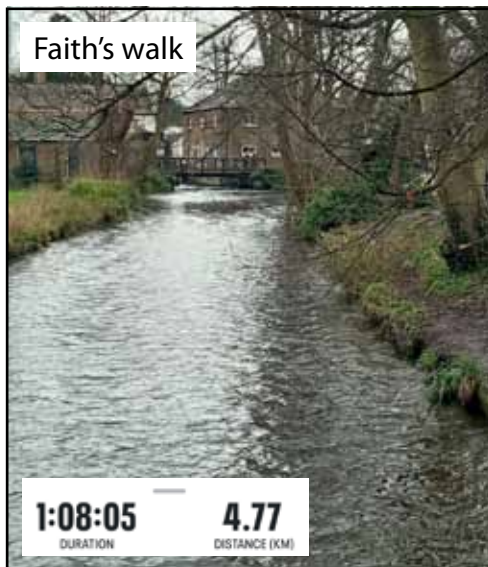
We will be featuring some more walks over the coming weeks.



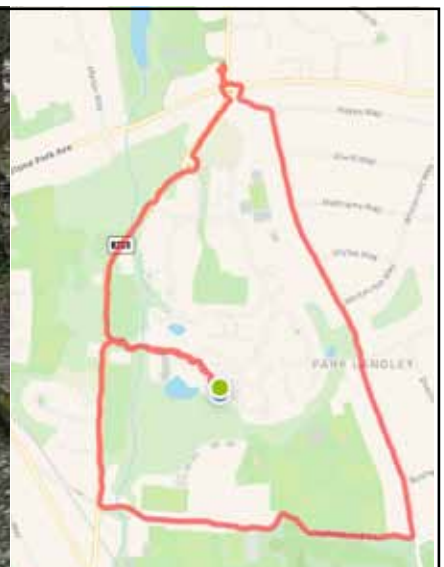
Lily's walk



Clodagh's walk



Faith's walk



Phoebe's walk



Hannah Fry's Mysterious World of Maths

This week, students in Years 7 to 9 were asked to watch Dr Hannah Fry's programmes on Mathematics.

The first three shows are a documentary series in which Dr Fry explores the mystery of maths. Is it invented like a language or is it discovered and part of the fabric of the universe?

Then it's "The Joy of Data", which is an exploration of data. What is data? How is it stored, shared, made sense of? And what does data reveal about us and the world?

The final instalment of the week is about Ada Lovelace. She was a computer pioneer and in this short film, Dr Fry tells the story of her remarkable life. It is an enthralling tale of how a life infused with brilliance, but blighted by illness and gambling addiction, helped give rise to the modern era of computing.

These programmes were broadcast on BBC Two and are all available to watch on BBC iPlayer.



BBC Bitesize

Lockdown Learning
Mon 18 - Fri 22 Jan

Monday	Tuesday	Wednesday	Thursday	Friday
BBC TWO Secondary Learning on BBC Two (11-14 years)				
14:00 Magic Numbers: Hannah Fry's Mysterious World of Maths: Numbers As God	14:00 Magic Numbers: Hannah Fry's Mysterious World of Maths: Expanded Horizons	14:00 Magic Numbers: Hannah Fry's Mysterious World of Maths: Weirder and Weirder	14:00 The Joy of Data with Dr Hannah Fry	14:00 Calculating Ada: The Countess of Computing with Dr Hannah Fry

Continue your learning at bbc.co.uk/bitesize
Catch up on all the shows on BBC iPlayer

Year 10 DT – Electric Cars

I was really impressed and very much enjoyed the high quality presentations delivered by my Year 10 DT group earlier this week. The subject was the Electric Car, which formed part of the work they have been doing on the topic Renewable Energy.

Students had researched in great detail the pros and cons of the electric car in line with the Government initiative for it to be the main power source to power all vehicles on our roads by 2030.

Students chose a car manufacturer to focus their investigations on. They then found out about how their electric cars were manufactured, their ethos as a company and their approach to electric vehicles moving forward. They learnt about the 'Kaizen' approach towards their products; workers and systems using continuous development in bettering themselves aiming for perfection within the organisation.

THE WAY FORWARD?

- ELECTRIC CARS MAY BE THE WAY FORWARD BECAUSE THESE CARS ARE BETTER FOR THE ENVIRONMENT AND ARE LESS NOISY OVERTIME
- FEUR HUNZDE, A GLOBAL ANALYST, PREDICTS THAT ELECTRIC VEHICLES WILL BE THE NORM BY 2030
- VEHICLE CHARGING SPOTS ARE BEING INSTALLED MORE WIDELY TO PERSUADE PEOPLE TO BUY ELECTRIC CARS

I was really impressed by all students and their presentations. Well done Year 10!

Mrs Solari

Cons of the electric car

- The negative side:**
 - Majority of electric cars can take up to 18 - 20 hours to charge so this is quite the time investment rather than money. However there are some kids that believe can do the job in about half the time.
- They are expensive, many electric cars can go up to about 130,000 and others are about 140,000. This depends on the company, size, design and so on.
- The cheapest electric car is the Renault Twizy, but costs about 110,395 plus battery (top left corner).
- There are not always charging stations around but slowly there are more becoming.
- There are fewer choices, not all are suitable or the comfort of the family size - for example the Renault Twizy is really the smallest family car.

Bentley: Bentayga Hybrid

Bentley released the world's first luxury hybrid in 2018, but it has recently been replaced with a newer model to make it even better than the last.

These are some of Bentley's new features:

- My Battery charge tool: allows you to manage and schedule charging via the Bentley app.
- E-charging service helps find charging stations near you.
- The E motor and the V6 engine work together to ensure minimal emissions on your trip.
- An impressive electrical range of 836km (maximum)

John Whitgift Foundation Commemorates 425th Anniversary with Daily Posts



#425in365 Day 16:

In the 16th century the manor house of Croydon was the summer house for the Archbishops of Canterbury with visits from monarchs, dignitaries and the Church. The Palace gradually became dilapidated and surrounded by slums and stagnant ponds. In 1781, the archbishops sold it and purchased a new residence at nearby Addington. Nevertheless, many of the buildings of the original Croydon Palace survive, and are in use today as Old Palace School.



Last Week's Puzzle Winner

We had over 30 entries to last week's Maths Puzzle.

Congratulations to Isobel in Year 7, who was our random winner.

Why not have a go at this week's puzzle?

Puzzle Fun Competition

What number should replace the question mark?

4			
6	2		
9	?	1	
19	10	7	6

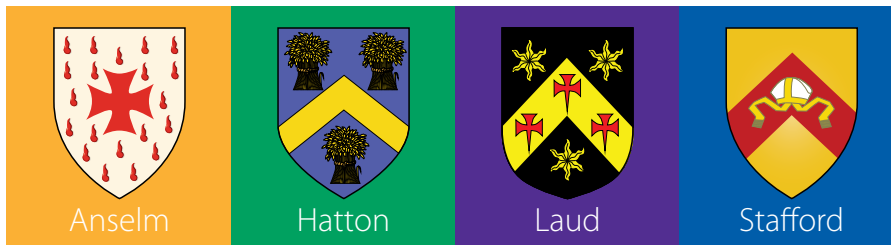
Answer on page 15

Year 1 PE

Year 1 enjoyed an exciting PE session with Mrs Coster, when they took part in an online treasure hunt. Here they are looking 'too cool for school' in the sunglasses they found for the sunny weather.



Week 1: House Challenge to Walk Around the World



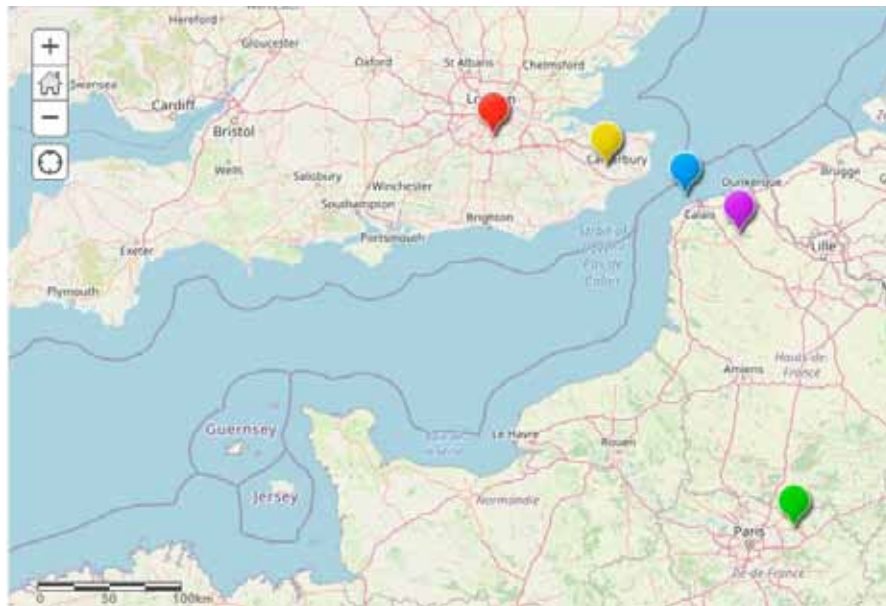
Here are the standings after 1 week of walking. Already each team has made good progress, but it is Hatton which is currently in the lead!

House	Total steps walked	Total km walked
Anselm	120,821	78
Hatton	685,319	442
Laud	310,448	200
Stafford	214,624	138

As you can see on the map that means Anselm have made it to the Kent Downs AONB, Stafford are nearing the french coast, Laud are in the nice French town of Saint Omer and Hatton have reached Disneyland Paris!

Great work everyone. You can track our progress weekly on this map online link: <https://arcg.is/1W4m1T>

Keep tracking those steps on your House Team.



New Film Alert: An Introduction to GCSE Art, Craft & Design



We're sure Mrs Broad's new film: An Introduction to GCSE Art, Craft & Design will ensure this continues to be a very popular subject option at Old Palace.

<https://youtu.be/C9U4mG6DEpQ>

Art Idea



Nuwaylah in Year 9 has been developing her digital drawing skills during lockdown.

We just love her Old Palace girl!

Virtual Open Morning Live Q&A

Seniors
Saturday
6 February
10.30am

Open to families looking for a Year 7 place in September 2022 or 2023

www.oldpalace.croydon.sch.uk/admissions/open-days

Name the Girl Above

Calling all Year 7s: can you help us find a name for this Old Palace student?

Year 9 student, Nuwaylah, has created this brilliant little cartoon of an Old Palace Girl. We thought it would be great to give her a name, but what shall we call her?

It's over to you.

Send your suggestions to our Marketing Manager, Mrs Berry, by Friday, 5th February.

Then we will pick out the most popular names and ask you all to vote.

Email: nberry@oldpalace.croydon.sch.uk

Year 6: Elephant Paintings





A letter from Mrs Nike

Dear all,

As always, I am extremely impressed with the quality of work you are producing at home and the way you are engaging with the lessons and activities.

Year 1 showed great dedication this week as they dressed in their swimming kit and took part in their swimming lesson despite the lack of water!

The topic Year 2 is studying is 'Beat, Band, Boogie' and it is great to see that the girls have made their own percussion instruments. You will be writing your own music before you know it!

Year 3 yet again inspired us with their insights into Gandhi and his life. I feel much more knowledgeable after reading your work! Thank you.

Year 5 had a great time this week writing roller coaster poems. They sure did make me feel like I was back at the funfair.

The children attending the Critical Workers Provision have also been having a great time filled with fun and learning.

So, this week, I would like to encourage you to keep going. Don't forget to make time to exercise, eat well, chat to your friends and family and explore new interests.

Mrs Nike

Head of Pre School & Preparatory

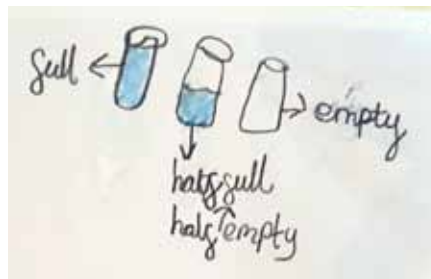
Year 2 Science Project: Can Water Make Music?

Year 2 pupils have been investigating the topic: Can Water Make Music?

Nia said: "Water can make music. The less water you put in makes a higher pitch and a lot of water makes a lower pitch sound."



Lilla and Maya playing their water music.



Nia



Year 3 Maths Certificates



Aashna with her Superman Certificate.



Lottie with her Superman Certificate.



Anya with her Ironman Certificate.

Lunchtime Pizza Making

Last Friday, girls at Prep made Pizza with Mrs Coster as a lunchtime treat. The results were very impressive.



Lydia



Ellie



Aashita



Iola



Riya

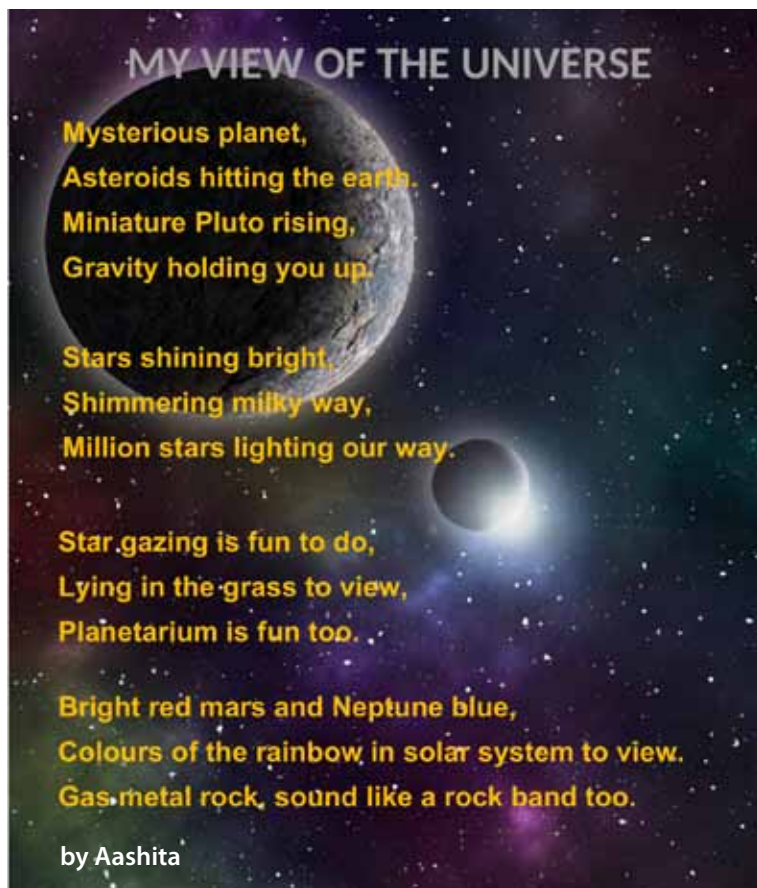


Aditi



Akshi and Rishi

Year 5 More Space Poems



Advika in Year 5 has been inspired by our work on the planets to complete this excellent painting in acrylics.

Year 2: Beat, Band, Boogie!

More percussion instruments.



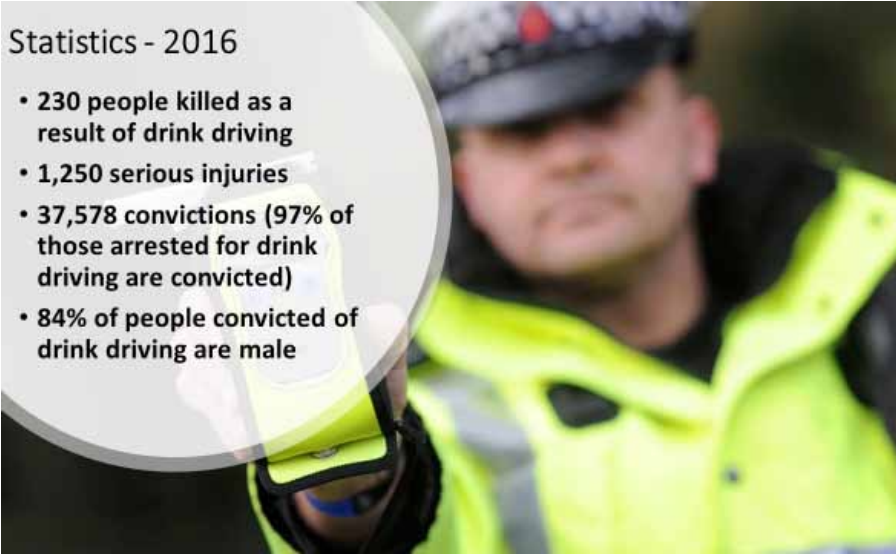
Year 12: Learning For Life

Last week, Mr Fuller ran a L4L session with Year 12. It focused on road safety and was aimed at developing students' awareness of risk and enabling them to become more confident in their use of the roads. Students enjoyed asking questions about relevant laws and shared with each other 'top tips' on learning to drive. As many are now looking forward to beginning to learn to drive, it was a very useful and enjoyable session.

Thanks to all students in Year 12.

Statistics - 2016

- 230 people killed as a result of drink driving
- 1,250 serious injuries
- 37,578 convictions (97% of those arrested for drink driving are convicted)
- 84% of people convicted of drink driving are male



Where's Sahara?

If Prep pupils have been wondering what's happened to Sahara the snail, we have good news!

She is being looked after by our key worker staff and children.

Here she is enjoying lunch....




Year 3 RS: The Life of Gandhi

Year 3 pupils have been producing posters on the Life of Gandhi as part of their RS studies. Here is one by Aanya.

Mahatma Gandhi

Early Life
Mohandas Karamchand Gandhi was born in Porbandar, north-west India on 2nd October 1869. He grew up in a righteous family and learned from his mother to be honest and always tell the truth. At the age of 19, he travelled to London to study law, after which he moved to South Africa as an advocate. Apartheid was in force in South Africa. Gandhi was horrified at the way coloured people were treated. On one occasion, Gandhi was removed from a train because he was not white. These experiences defined his freedom struggle movement in India.

The "Great Soul" of India



Non-Violence and non-cooperation
He taught his followers to resist to the British through a passive resistance method of non cooperation with the authorities. This was called "Satyagraha" which means 'truth and firmness'. He also encouraged people to respond to violent methods used by the British in a non-violent manner. His use of non-violent protest eventually led to India's Independence.

Independence Movement
Gandhi returned to India in 1916. Within a few years, he became a leader of India's independence movement against the British rule. His followers stopped using British goods. When the British introduced a tax on salt, he walked 241 miles to encourage fellow Indians to make their own salt.

Death
India won its independence in 1947, but he was disappointed that the British had partitioned India into India and Pakistan. This led to discontent across certain groups of people and eventually led to him being shot dead by a terrorist on January 30, 1948. To this day, India mourns his demise by marking his death anniversary as Martyr's Day. The country lovingly remembers him as "Bapu" or "Father of the nation".

By
Aanya
3J

Critical Workers Provision



Children in the Critical Workers Provision have been enjoying a wide variety of activities. While the Prep girls have been completing their lessons, Nursery children have made snowmen and dressed the dolls ready for a day out in winter, played games, enjoyed painting and mark making, writing, counting, puzzles and Lego.

day, they have walked a mile, climbed a tree, looked for birds and used the bikes, scooters and balls.

On wet days the gym, dancing and yoga have been very popular. Staff have been very impressed with the way that the group have been consistently kind, considerate and friendly to one another.

After lunch there has been a big interest in the outdoors. All children have been in the playground or on the field every



Adapting to Change: Sports Leaders During Lockdown



Sports Leaders have focused on the essential leadership quality of 'adaptation' in order to deliver their sessions remotely.

Students have had to think of different ways to motivate participants, making sure any equipment needed is accessible to all!

Sports Leaders Level 1 saw Faith teach the skill of handstands while Anika led a fitness based session; we even had music provided from 'Alexa'. Catherine developed bowling over arm in cricket using a pair of socks and a shoe box, whilst Mary got students to fill their rucksacks with books to act as an additional weight when attempting some muscle strengthening exercises.

Meanwhile, in Sports Leaders Level 2, Suraiya provided some much needed motivation to Year 11 students by inviting them to take part in a quiz followed by a competitive game of skittles using household (non-breakable) objects. Sophia finished the session with a relaxing and stress-relieving stretching session.

Year 7: Netball



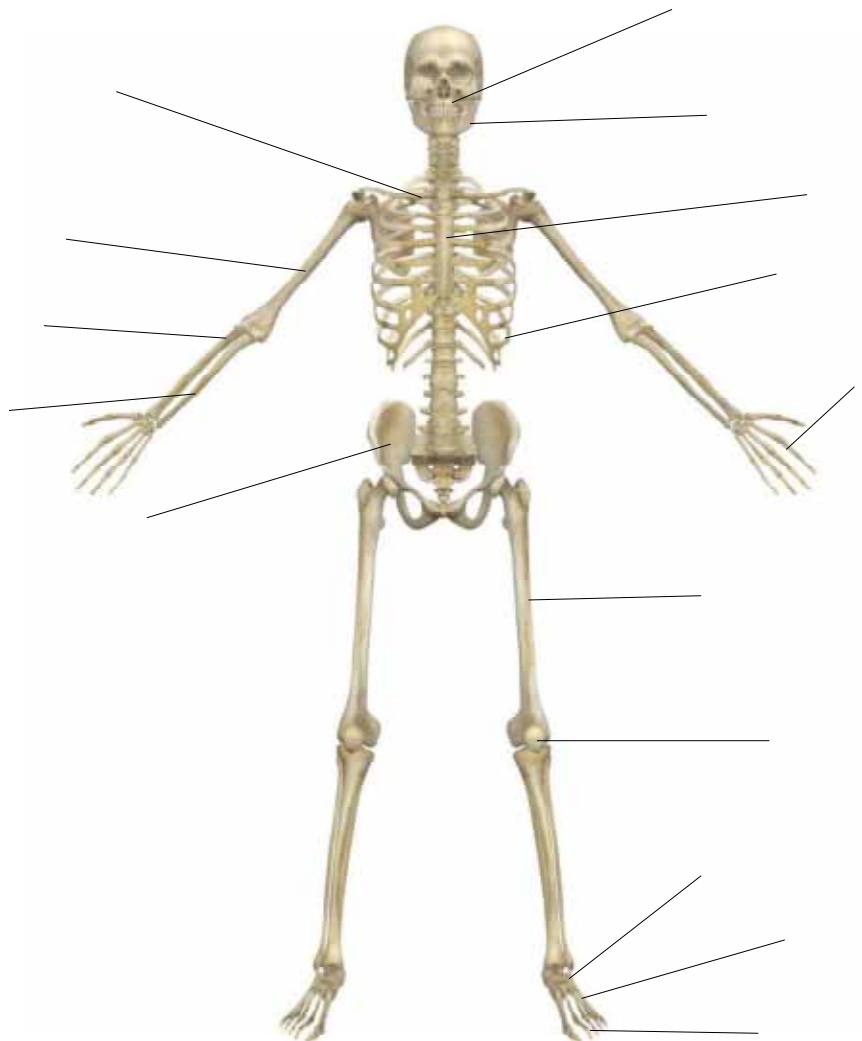
Zara in Year 7 sent us a photo of her practising Netball in her garden.

She said: 'I have been practising my shooting technique and I often time myself to see how many I can get in the net in a certain amount of time.'

GCSE PE Quiz

The Year 10 GCSE PE group have been studying the functions of the skeleton in relation to sports performance and the names of the key bones used for Sport. Year 11 have been revising this topic as well.

Can you label this skeleton?



Answer on page 15

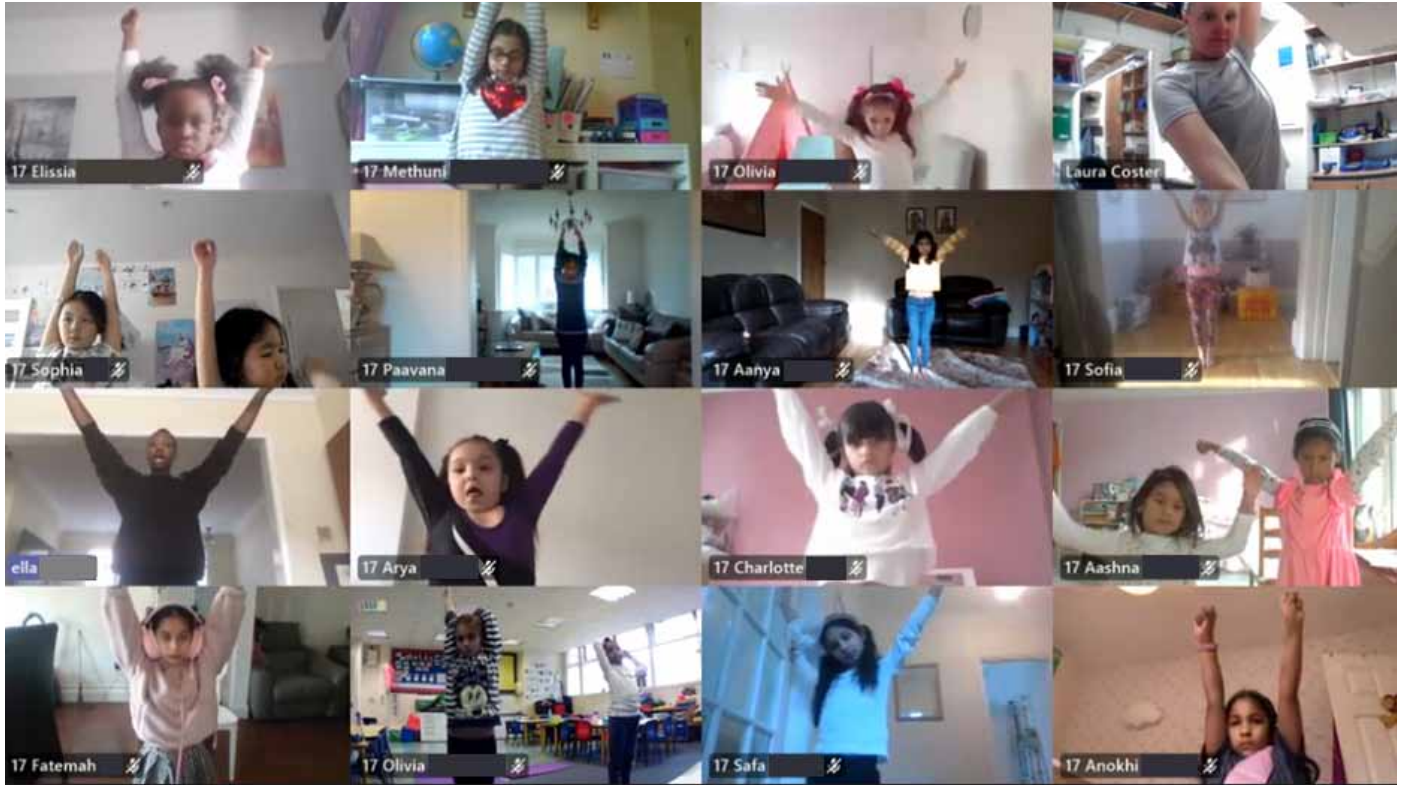
Years 3-5: Cheerleading



Pupils in Years 3–5 were excited to take part in a virtual Cheerleading workshop with Ella, the Coach from Crystals Elite.

The girls had a fantastic time and learnt a small routine.

Great work Cheerleaders



Year 5: Roller Coaster Poem

Am I tall enough
For this ride?
It's the question I've
been asking myself
insidell



Yes! I made it in to the
queue!!
I'm here waiting to try
something new



Its almost my turn,
I cannot wait
This is it now, I've
sealed my fate!!



Here we go, it's time to
scream
I hope I can keep down
my ice cream!!



We're climbing slow,
now flying fast – this
ride is awesome, I'm
having a blast!



The Epic Roller Coaster Ride....!

By Riya, 5J



It's off to the gift shop to
get my pics
My legs are like jelly
I'll need walking sticks!!

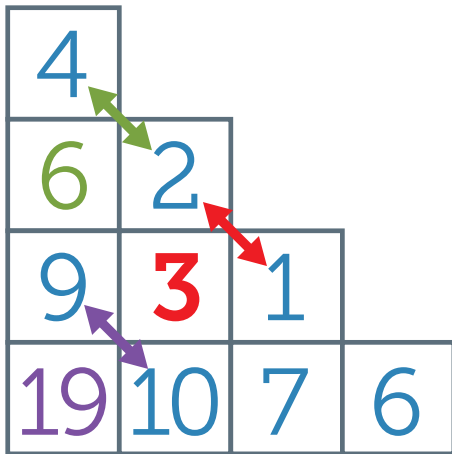


Wow, what a thrill
this ride is brill!!



We're spinning and
turning
My tummy is churning!!

Answer Puzzle Fun Competition on page 5



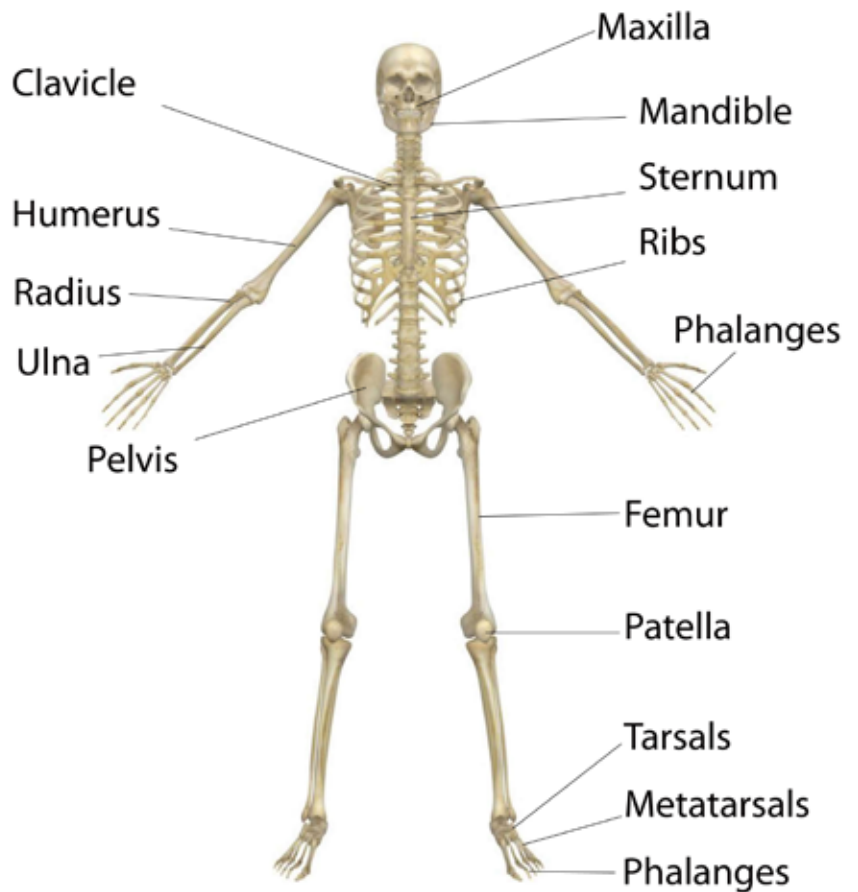
Two numbers touching diagonally add to the number between them

eg $4+2=6$ (green)

$9+10=19$ (purple)

Hence $2+1=3$ (red)

GCSE PE Quiz Answers



Year 6 PE

Year 6 have embarked on their first leadership experience during their PE lesson this week.

The focus was 'participants' and ensuring all activities were suitable for their age.

They had a lot of fun, designing their own little activity and explaining it for 30 seconds before students had a quick go at completing the task. They confidently described their activity and what participants had to do. I look forward to seeing many more ideas in the weeks ahead.

The next session is looking at 'area' which is very apt at the moment as they will have consider the different areas students will be currently working in!

Trainer Balance Challenge

Maya, in Year 6, successfully completed the Trainer Balance challenge during her Swimming lesson this week. After several practices and with great perseverance, she managed to keep her trainer balanced throughout the whole process.

The challenge is to lay flat on your back, one leg in the air, whilst balancing a trainer on the sole of your foot. You then have to roll onto your front and return onto your back without the trainer falling off. As you can imagine, you have to be very agile to be able to complete the maneuver.

Mrs Tamplin has been trying; however, she says so far her lockdown tummy is getting in the way!

Why not have a go at home!

